



**CHANGE
ONE THING** **CHANGE
EVERYTHING**

INTRODUCING THERANOVA FOR EXPANDED HEMODIALYSIS [HDx]

Specifications and Comparison Guide

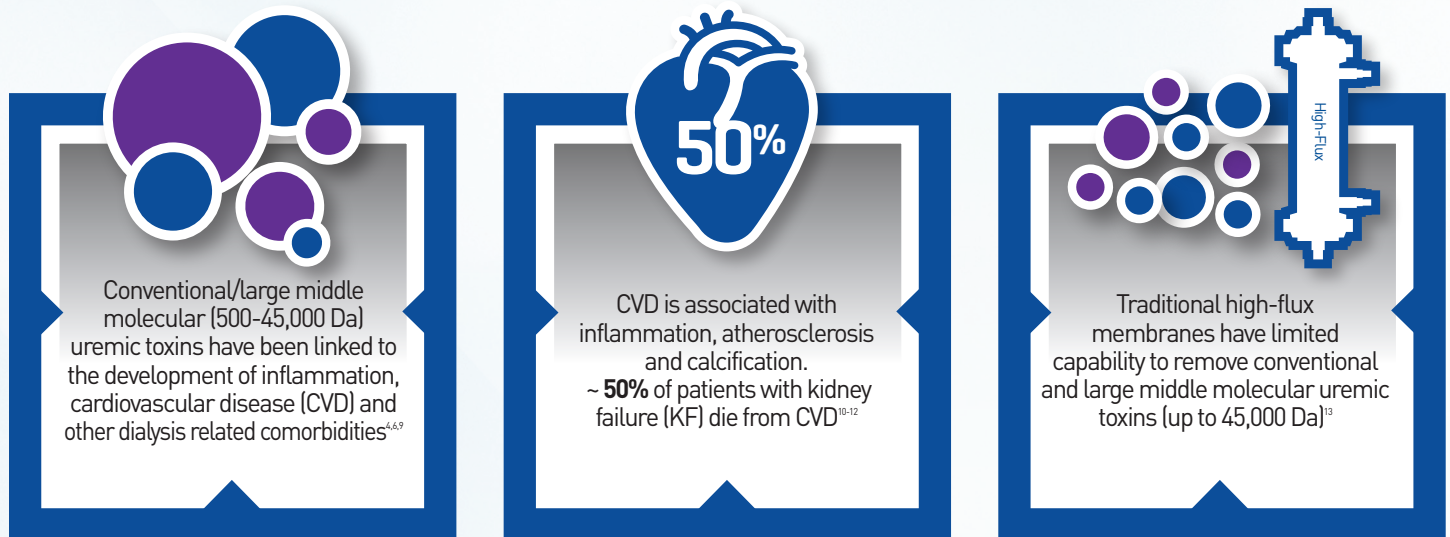
The Theranova Dialyzer is indicated for patients with chronic kidney failure who are prescribed intermittent hemodialysis. It provides an expanded solute removal profile with increased removal of various middle and large molecules (up to 45 kDa) that may play a pathologic role in the uremic clinical syndrome. The Theranova Dialyzer is not intended for hemofiltration or hemodiafiltration therapy. The total extracorporeal blood volume for the Theranova Dialyzer and the set should represent less than 10% of the patient's blood volume. For single use only.

Rx Only. For safe and proper use of this device refer to the Instructions for Use.

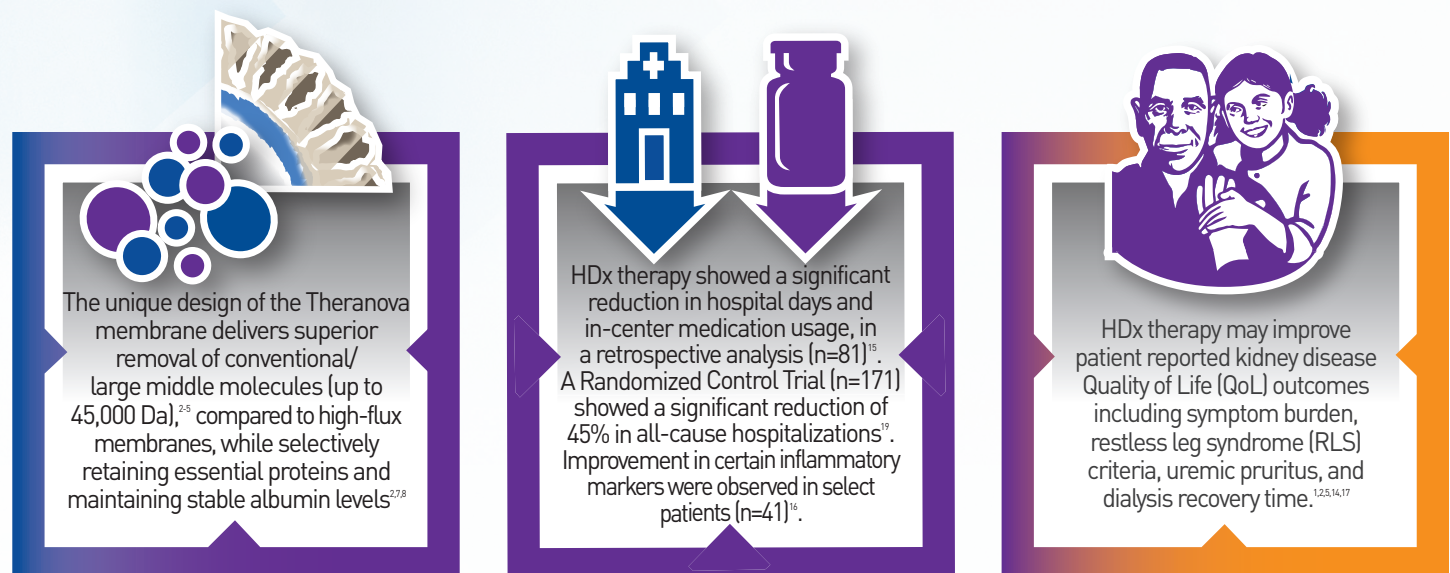


HDx ENABLED BY THERANOVA: ONE STEP CLOSER TO THE NATURAL KIDNEY

Theranova, the next evolution in hemodialysis brings us a step closer to the natural kidney by **expanding clearance** of conventional/large middle molecules (500 – 45,000 Da)* compared to traditional high-flux membranes.¹⁻⁵



CHANGE ONE THING.



CHANGE EVERYTHING.

SIMPLY CHANGE THE DIALYZER MEMBRANE AND EXPAND CLEARANCE FOR HD PATIENTS.⁵

*Conventional middle molecules, 500 Da – <25,000 Da, such as κ -Free Light Chains, large middle molecules 25,000 Da – 45,000 Da such as λ -Free Light Chains¹.

THERANOVA 400

PRODUCT CODE 955691

CLEARANCE/REDUCTION RATIOS

Theranova 400 Dialyzer Clearance ($\pm 10\%$, Cytochrome C $\pm 20\%$, Myoglobin $\pm 30\%$)															
UF=0 mL/min	Q _D = 300 mL/min					Q _D = 500 mL/min					Q _D = 800 mL/min				
Q _B (mL/min)	200	300	400	500	600	200	300	400	500	600	200	300	400	500	600
Urea (60 Da)	191	246	272	285	291	198	282	344	388	418	199	293	376	445	502
Phosphate (95 Da)	179	225	250	266	276	192	261	311	348	376	196	279	345	400	446
Creatinine (113 Da)	184	232	258	273	282	194	269	323	362	391	198	285	357	416	465
Vitamin B ₁₂ (1.4 kDa)	148	178	199	214	226	164	207	239	264	285	174	227	267	301	329
Inulin (5.2 kDa)	119	140	156	169	180	133	161	183	200	216	144	178	204	225	245
Cytochrome C (12 kDa)	109	128	142	153	164	122	146	165	180	194	133	161	183	202	219
Myoglobin (17 kDa)	93	108	119	129	138	104	123	137	150	161	114	135	152	166	180

	Mean Reduction Ratio (%) ²		Mean Overall Clearance (mL/min) ²		Q _B /Q _D (mL/min)	Albumin Removal (g/treatment) ²	
	300/500	400/600	300/500	400/600		300/500	400/600
B2-microglobulin [B2m] (12 kDa)	71.5	78.5	67.9	84.7	Median (range)	2.9 (1.5-3.9)	3.2 (1.9-3.9)
Myoglobin (17 kDa)	63.1	67.9	52.0	58.7			
Kappa free light chains [κ-FLC] (23 kDa)	66.3	72.9	26.2	35.0			
Complement Factor D [CFD] (24 kDa)	56.9	63.0	26.5	26.3			
α1-microglobulin [α1m] (33 kDa)	21.7	24.8	3.8	3.3			
Chitinase-3-like protein 1 [YKL-40] (40 kDa)	60.5	63.6	Only Reduction Ratio available				
Lambda free light chains [λ-FLC] (45 kDa)	42.5	48.1	8.5	10.0			

Theranova 400 Randomized Controlled Trial (RCT)¹⁸

Mean \pm STD Reduction Ratio (%)	Theranova 400	ELISIO-17H		Theranova (N=86)	High-Flux HD (N=85)	p value
Lambda free light chains [λ-FLC] (45 kDa)	33.3 \pm 11.0* (p<0.001)	17.2 \pm 12.9	Hospitalization Events	18	31	--
Complement Factor D [CFD] (24 kDa)	45.0 \pm 10.4* (p<0.001)	23.6 \pm 12.1	Total Patient-Years	32.4	30.5	--
Kappa free light chains [κ-FLC] (23 kDa)	63.8 \pm 11.8* (p<0.001)	50.0 \pm 13.2	Hospitalization Rate (per PY)	0.56	1.02	0.0495
B2-microglobulin [B2m] (12 kDa) ¹⁸	73.6 \pm 10.4* (p<0.001)	65.4 \pm 9.4	Hospital Length of Stay (days)	4.11	4.63	0.4060

Open Label, Randomized Controlled Trial evaluating safety and efficacy; 21 US clinics; N=171; 86-Theranova 400; 85-Elisio-17H; 24 week study

*Statistical significance (< 0.001).

A post-hoc analysis of this RCT showed a significant reduction of 45% (p<0.049) in all-cause hospitalizations.¹⁹

Pre-dialysis serum albumin levels (g/dL)¹⁸

Group	Baseline	Week 4	Chg vs Baseline Week 4	Week 8	Change vs Baseline Wk 8	Week 24
Control	4.0 \pm 0.3	4.0 \pm 0.2	0.0 \pm 0.2	4.0 \pm 0.3	0.0 \pm 0.2	4.1 \pm 0.4
Theranova	4.0 \pm 0.3	4.0 \pm 0.3	-0.1 \pm 0.2	3.9 \pm 0.3	-0.1 \pm 0.3	4.0 \pm 0.3

- Although small, a statistically-significant reduction in serum albumin noted at Weeks 4 and 8.
- The observed changes at 4 and 8 weeks were well below 5% and the mean levels were still below normal laboratory ranges.
- Changes from baseline were not statistically significant between the two study groups at Week 12 and thereafter.
- The primary safety endpoint of this study was the pre-dialysis serum level of albumin after 24 weeks of treatment.
- The analysis of the endpoint confirmed that Theranova 400 is non-inferior to Elisio-17H in maintaining pre-dialysis serum albumin after 24 weeks of treatment based on a 5% non-inferiority margin (-0.1765 g/dL).

THERANOVA 400

PRODUCT CODE 955691

CHARACTERISTICS/COMPARISON GUIDE*

Characteristics

Theranova 400 Membrane Characteristics			
Surface area (m ²)	1.7	Maximum TMP (mmHg)	600
UF Coefficient in Vitro (mL/h.mmHg)	48	Storage conditions	<30 °C / 86 °F
Residual blood volume (mL)	<1	Blood flow rate Q _B (mL/min)	200 – 600
Priming volume (mL)	≥300	Dialysate flow rate Q _D (mL/min)	300 – 800

Comparison Guide

(mL/min)	Baxter		Fresenius	Asahi KASEI		Nipro		BBraun
	Theranova 400	REVACLEAR 400	Optiflux F200NR	REXEED-18A	REXEED-21A	ELISIO-19H	ELISIO-21H	Diacap Pro 19H
Urea [60 Da]	344	338	330	330	340	343	346	332
Creatinine [113 Da]	311	315	289	309	317	309	319	305
Phosphate [95 Da]	323	297	290	289	299	296	304	278
Vitamin B12 [1.4 kDa]	239	213	189	197	212	215	219	202
UF Coefficient	48	54	62	71	74	76	82	97
Surface Area (m ²)	1.7	1.8	2.0	1.8	2.1	1.9	2.1	1.9
Membrane	PAES/PVP	PAES/PVP	Polysulfone	Polysulfone	Polysulfone	Polynephron	Polynephron	Polysulfone
Sterilization Method	Steam	Steam	Electron Beam	Gamma-Ray	Gamma-Ray	Dry Gamma	Dry Gamma	Gamma

NOTE: Clearances in Vitro; Q_B=400 mL/min; Q_D=500 mL/min.

Comparison criteria is based on stated clearance values [Vitamin B12, Phosphate, Creatinine, Urea - in order, Q_B=400 mL/min].

This table may not be all-inclusive.

*Recommended cross-reference based on data from manufacturers' published specification sheets.

**FOR MORE INFORMATION, CONTACT YOUR BAXTER REPRESENTATIVE,
OR VISIT: [HTTPS://HEMODIALYSIS.BAXTER.COM/HDx](https://hemodialysis.baxter.com/HDx)**

REFERENCES

1. Theranova IFU, 2020. 2. Kirsch AH, et al. Performance of hemodialysis with novel medium cut-off dialyzers. Nephrol Dial Transpl 2017; 32(1):165-72. 3. Boschetti-de-Fierro A, Voigt M, Storr M. et al. MCO Membranes: Enhanced Selectivity in High-Flux Class. Sci Rep 5, 18448 (2015). <https://doi.org/10.1038/srep18448>. 4. Zweigart C, Boschetti-de-Fierro A, Hulko M, et al. Medium cut-off membranes - closer to the natural kidney removal function. Int J Artif Organs. 2017;40(7):328-334. doi:10.5301/ijao.500060. 5. Lim JH, Park Y, Yook JM, et al. Randomized controlled trial of medium cut-off versus high-flux dialyzers on quality of life outcomes in maintenance hemodialysis patients. Nature/Sci Rep. 2020; 10:7780. 6. Hutchison CA, et al. The Rationale for Expanded Hemodialysis Therapy (HDx). Contrib Nephrol 2017; 191:142-52. 7. Krishnasamy R, Hawley CM, Jardine MJ, Roberts MA, Cho Y, Wong M, Heath A, Nelson CL, Sen S, Mount PF, Pascoe EM, Vergara LA, Paul-Brent PA, Toussaint ND, Johnson DW, Hutchison CA. A tRial Evaluating Mid Cut-Off Value Membrane Clearance of Albumin and Light Chains in HemoDialysis Patients (REMOVAL-HD): A Safety Device Study. Blood Purif. 2020; 1-11. 8. Bunch A, Sanchez R, Nilsson LG, Bernardo AA, Vesga JI, Ardila F, Guerrero IM, Sanabria RM, Rivera AS. Medium Cut-Off Dialyzers in a Large Population of Hemodialysis Patients in Colombia: COREXH Registry. Ther Apher Dial. 2020; 1-11. doi: 10.1111/1744-9987.13506. 9. Wolley M, Jardin M, Hutchison CA, Exploring the Clinical Relevance of Providing Increased Removal of Large Middle Molecules. Clin J Am Soc Nephrol 2018;13:805-814. 10. Foley RN et al. Clinical epidemiology of cardiovascular disease in chronic renal disease Am J Kidney Dis. 1998;32 (Suppl 3):112-9. 11. Cobo G et al. C-reactive Protein: Repeated Measurements Will Improve Dialysis Patient Care. Sem Dialysis 2016;29:7-14. 12. Yeun JY, et al. C-Reactive Protein Predicts All-Cause and Cardiovascular Mortality. Am J Kidney Dis 2000;35:469-476. 13. Ronco C & La Manna G. Expanded Hemodialysis: A New Therapy for New Class of Membranes. Contrib Nephrol. 2017;190:124-133. 14. Alarcon JC et al. Impact of medium cut-off dialyzers on patient-reported outcomes (PROs): COREXH Registry. Blood Purif. 2020. doi: 10.1159/000508803. 15. Ariza JG et al. Measuring the association of switching patients from hemodialysis to expanded hemodialysis, with hospitalizations, medication use, costs and patient utility. Virtual International ISPOR 2020. Poster PUK15. 16. Cantaluppi V et al. Removal of large-middle molecules, inhibition of neutrophil activation and modulation of inflammation-related endothelial dysfunction during expanded hemodialysis (HDx). Nephrol Dial Transplant 2019. Abstract F0048. 17. Kharbanda K et al. A randomised study investigating the effect of medium cut-off haemodialysis on markers of vascular health compared with on-line haemodiafiltration (MoDal study). Manchester University NHS Foundation Trust. Poster clinicaltrials.gov [NCT03510520]. 18. Weiner DE et al. Efficacy and safety of expanded hemodialysis with the Theranova 400 dialyzer: A randomized controlled trial. CJASN 2020. doi:10.2215/CJN.01210120. 19. Tran H et al. Reduction in All-Cause Hospitalization Events Seen in a Randomized Controlled Trial Comparing Expanded Hemodialysis vs. High-Flux Dialysis. ADC Conference 2021 Poster #1070

Baxter

Baxter and Theranova are trademarks of Baxter International Inc. or its subsidiaries
All other trademarks are the property of their respective owners.
US-RC46-200002 v5.0 03/21